

# Grand Teton



# The Grand Teton STANDARD FEATURES

## Grand Teton Features

1st floor sq. ft. 818  
 2nd floor sq. ft. 561  
 3rd floor sq. ft. 561  
 Total sq. ft. 1940  
 Screen Porch sq. ft. 181  
 Open Porch sq. ft. 0  
 Bedrooms 3  
 Loft/Sitting Area 1  
 Bathrooms 2.5  
 Fireplace 1  
 Washer/Dryer Hook-ups Y  
 Garage S/O 0  
 Walk-out basement S/O 0

## Special Features

### Appliances

- Stainless Steel, Black or White
- Frigidaire Refrigerator - Freezer with Automatic Ice maker
- Gas Stove & Range
- Microwave
- Dishwasher
- Disposal

### Cabinetry

- Kraftmaid Quality in a variety of finishes

### Painting

- All rooms primed and finished, choice of two colors
- All interior molding painted or natural pine

## Interior Finish

- White 5-inch baseboard and 3 1/2-inch door casings
- Shelf and rod in bedroom closets
- 5 shelf linen closet

## Counter Tops

- Full line of granite

## Windows & Doors

- Andersen 400 Series thermal pane wood windows including screens
- Andersen french doors

## Floor Coverings

- Premium (upgraded carpet choices in 2nd floor bedrooms, hallways and staircase.
- Maple or Oak hardwood flooring, main floor- living room/dining room/kitchen/hallway/bedrooms
- Ceramic tile in baths, utility and laundry room

## Heating & Air Conditioning

- Rheem high efficiency, 90 plus, natural gas furnace with humidifier
- Rheem high efficiency central air conditioning unit
- Superior 42-inch wood burning fireplace with cultured stone façade and wood mantle

## Plumbing & Fixtures

- Copper supply lines, PVC drains
- 50 gallon water heater
- Kohler or Toto chrome faucets
- 6' Lasco - whirlpool tub in master bath
- Kohler lavatories
- Kohler pedestal sink
- Stainless steel - double under mount sink in kitchen
- Exhaust fan/light in baths
- Ceramic tile in showers and tub, shower bases fiberglass

## Lighting & Electrical

- 200 AMP service, all wiring and plug placement to code and per electrical plan
- Front and rear exterior porch lights
- Recessed and overhead lights per lighting plan - standard white devices
- Light/fan ready junction box in bedrooms per plans

## Roofing & Exterior Finish

- Timberline heavy texture asphalt composition shingles - 25 year warranty
- Natural Cedar and Composite siding and trim with on-site final stain - choice of colors
- White aluminum "bead board look" soffits

## Home Electronics

- Category 5 phone wiring, 4 cable boxes and 4 phone jacks

## Foundation

- Four-foot crawl space with concrete floor and walls, vents, drain and lighting

## Natural Landscaping

- Final grade to meet codes with lot cleared of final building debris and dead tree branches.
- 2 outdoor water spigots provided
- Off-street natural stone parking place
- Step-stone path of natural shelf-rock to front door provided

## AVAILABLE MODELS AT HIDDEN CREEK

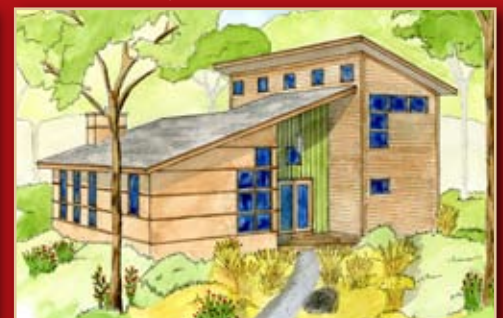
*Acadia I & II*



*Denali I & II*



*Grand Teton*



*Sequoia*



*Shenandoah*

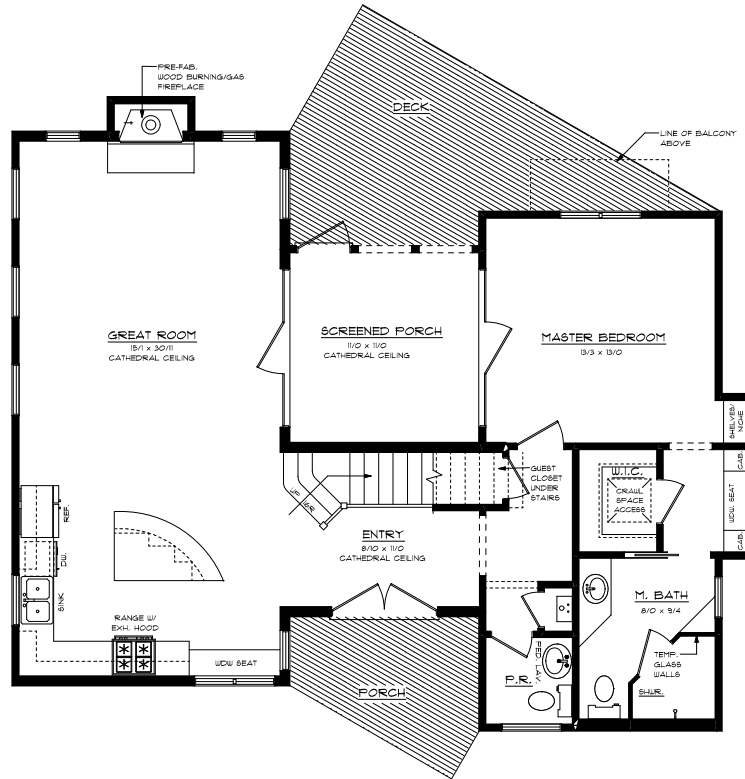


*Yellowstone*

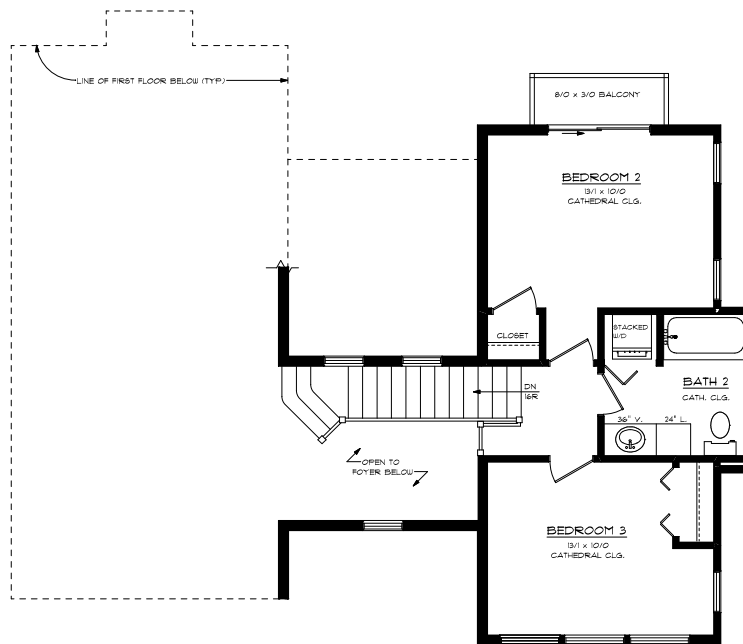


# The Grand Teton

## FLOOR PLAN OPTIONS



FIRST FLOOR PLAN



SECOND FLOOR PLAN