

# Denali II



# The Denali II STANDARD FEATURES

## Denali II Features

1st floor sq. ft. 1276  
 2nd floor sq. ft. 878  
 3rd floor sq. ft. 0  
 Total sq. ft. 2154  
 Screen Porch sq. ft. 250  
 Open Porch sq. ft. 250  
 Bedrooms 4  
 Loft/Sitting Area 1  
 Bathrooms 2.5  
 Fireplace 1  
 Washer/Dryer Hook-ups Y  
 Garage S/O 0  
 Walk-out basement S/O 0

## Special Features

### Appliances

- Stainless Steel, Black or White
- Frigidaire Refrigerator - Freezer with Automatic Ice maker
- Gas Stove & Range
- Microwave
- Dishwasher
- Disposal

### Cabinetry

- Kraftmaid Quality in a variety of finishes

### Painting

- All rooms primed and finished, choice of two colors
- All interior molding painted or natural pine

## Interior Finish

- White 5-inch baseboard and 3 1/2-inch door casings
- Shelf and rod in bedroom closets
- 5 shelf linen closet

## Counter Tops

- Full line of granite

## Windows & Doors

- Andersen 400 Series thermal pane wood windows including screens
- Andersen french doors

## Floor Coverings

- Premium (upgraded carpet choices in 2nd floor bedrooms, hallways and staircase.
- Maple or Oak hardwood flooring, main floor- living room/dining room/kitchen/hallway/bedrooms
- Ceramic tile in baths, utility and laundry room

## Heating & Air Conditioning

- Rheem high efficiency, 90 plus, natural gas furnace with humidifier
- Rheem high efficiency central air conditioning unit
- Superior 42-inch wood burning fireplace with cultured stone façade and wood mantle

## Plumbing & Fixtures

- Copper supply lines, PVC drains
- 50 gallon water heater
- Kohler or Toto chrome faucets
- 6' Lasco - whirlpool tub in master bath
- Kohler lavatories
- Kohler pedestal sink
- Stainless steel - double under mount sink in kitchen
- Exhaust fan/light in baths
- Ceramic tile in showers and tub, shower bases fiberglass

## Lighting & Electrical

- 200 AMP service, all wiring and plug placement to code and per electrical plan
- Front and rear exterior porch lights
- Recessed and overhead lights per lighting plan - standard white devices
- Light/fan ready junction box in bedrooms per plans

## Roofing & Exterior Finish

- Timberline heavy texture asphalt composition shingles - 25 year warranty
- Natural Cedar and Composite siding and trim with on-site final stain - choice of colors
- White aluminum "bead board look" soffits

## Home Electronics

- Category 5 phone wiring, 4 cable boxes and 4 phone jacks

## Foundation

- Four-foot crawl space with concrete floor and walls, vents, drain and lighting

## Natural Landscaping

- Final grade to meet codes with lot cleared of final building debris and dead tree branches.
- 2 outdoor water spigots provided
- Off-street natural stone parking place
- Step-stone path of natural shelf-rock to front door provided

## AVAILABLE MODELS AT HIDDEN CREEK

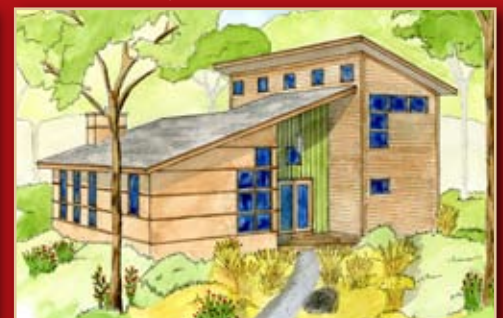
*Acadia I & II*



*Denali I & II*



*Grand Teton*



*Sequoia*



*Shenandoah*

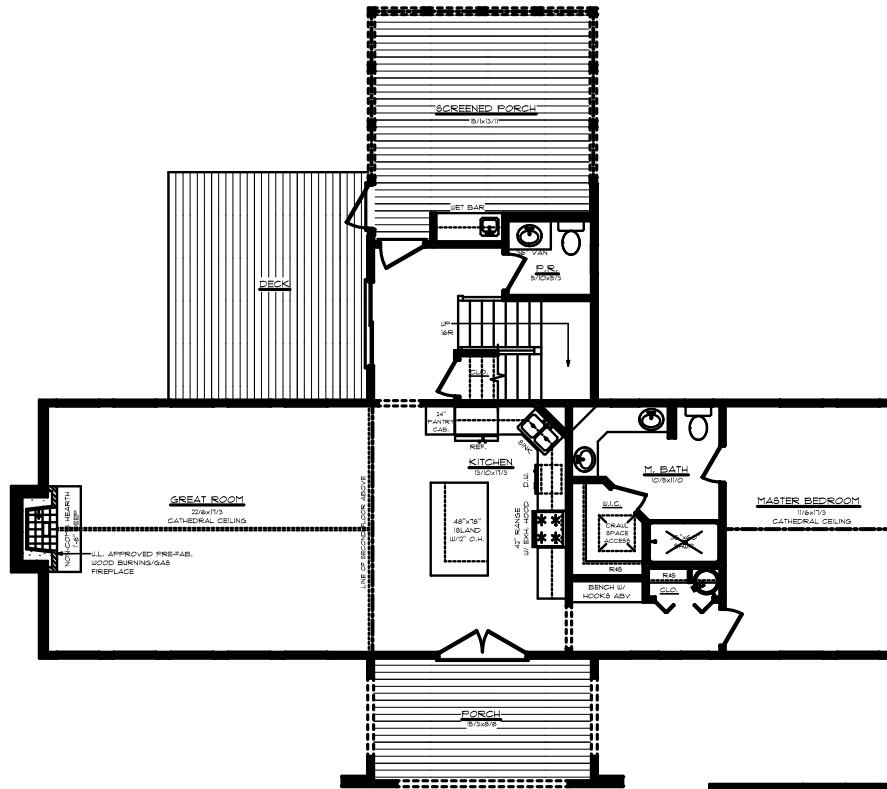


*Yellowstone*

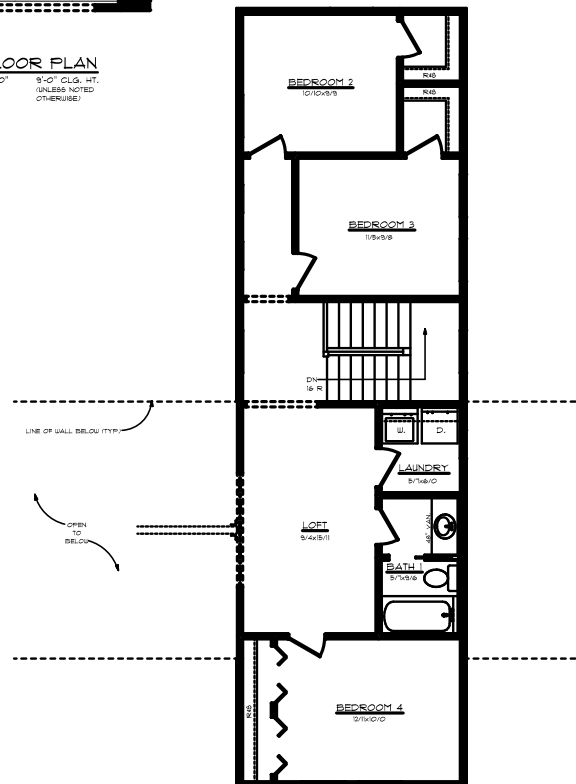


# The Denali II

## FLOOR PLAN OPTIONS



**FIRST FLOOR PLAN**  
 SCALE: 1/4" = 1'-0" 8'-0" CLG. HT.  
 128 SQ. FT. (UNLESS NOTED OTHERWISE)



**SECOND FLOOR PLAN**  
 SCALE: 1/4" = 1'-0" 8'-0" CLG. HT.  
 818 SQ. FT. (UNLESS NOTED OTHERWISE)