

Acadia II



The Acadia II STANDARD FEATURES

Acadia II Features

1st floor sq. ft. 1080
 2nd floor sq. ft. 657
 3rd floor sq. ft. 136
 Total sq. ft. 1873
 Screen Porch sq. ft. 148
 Open Porch sq. ft. 0
 Bedrooms 3
 Loft/Sitting Area 1
 Bathrooms 2.5
 Fireplace 1
 Washer/Dryer Hook-ups Y
 Garage S/O 0
 Walk-out basement S/O 0

Special Features

Appliances

- Stainless Steel, Black or White
- Frigidaire Refrigerator - Freezer with Automatic Ice maker
- Gas Stove & Range
- Microwave
- Dishwasher
- Disposal

Cabinetry

- Kraftmaid Quality in a variety of finishes

Painting

- All rooms primed and finished, choice of two colors
- All interior molding painted or natural pine

Interior Finish

- White 5-inch baseboard and 3 1/2-inch door casings
- Shelf and rod in bedroom closets
- 5 shelf linen closet

Counter Tops

- Full line of granite

Windows & Doors

- Andersen 400 Series thermal pane wood windows including screens
- Andersen french doors

Floor Coverings

- Premium (upgraded carpet choices in 2nd floor bedrooms, hallways and staircase.
- Maple or Oak hardwood flooring, main floor- living room/dining room/kitchen/hallway/bedrooms
- Ceramic tile in baths, utility and laundry room

Heating & Air Conditioning

- Rheem high efficiency, 90 plus, natural gas furnace with humidifier
- Rheem high efficiency central air conditioning unit
- Superior 42-inch wood burning fireplace with cultured stone façade and wood mantle

Plumbing & Fixtures

- Copper supply lines, PVC drains
- 50 gallon water heater
- Kohler or Toto chrome faucets
- 6' Lasco - whirlpool tub in master bath
- Kohler lavatories
- Kohler pedestal sink
- Stainless steel - double under mount sink in kitchen
- Exhaust fan/light in baths
- Ceramic tile in showers and tub, shower bases fiberglass

Lighting & Electrical

- 200 AMP service, all wiring and plug placement to code and per electrical plan
- Front and rear exterior porch lights
- Recessed and overhead lights per lighting plan - standard white devices
- Light/fan ready junction box in bedrooms per plans

Roofing & Exterior Finish

- Timberline heavy texture asphalt composition shingles - 25 year warranty
- Natural Cedar and Composite siding and trim with on-site final stain - choice of colors
- White aluminum "bead board look" soffits

Home Electronics

- Category 5 phone wiring, 4 cable boxes and 4 phone jacks

Foundation

- Four-foot crawl space with concrete floor and walls, vents, drain and lighting

Natural Landscaping

- Final grade to meet codes with lot cleared of final building debris and dead tree branches.
- 2 outdoor water spigots provided
- Off-street natural stone parking place
- Step-stone path of natural shelf-rock to front door provided

AVAILABLE MODELS AT HIDDEN CREEK

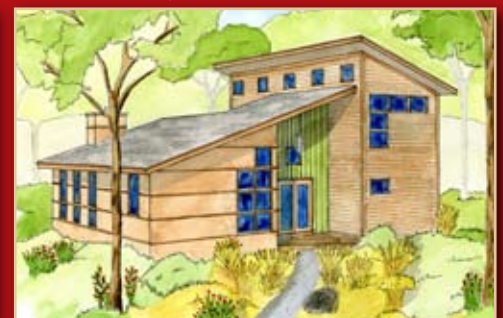
Acadia I & II



Denali I & II



Grand Teton



Sequoia



Shenandoah

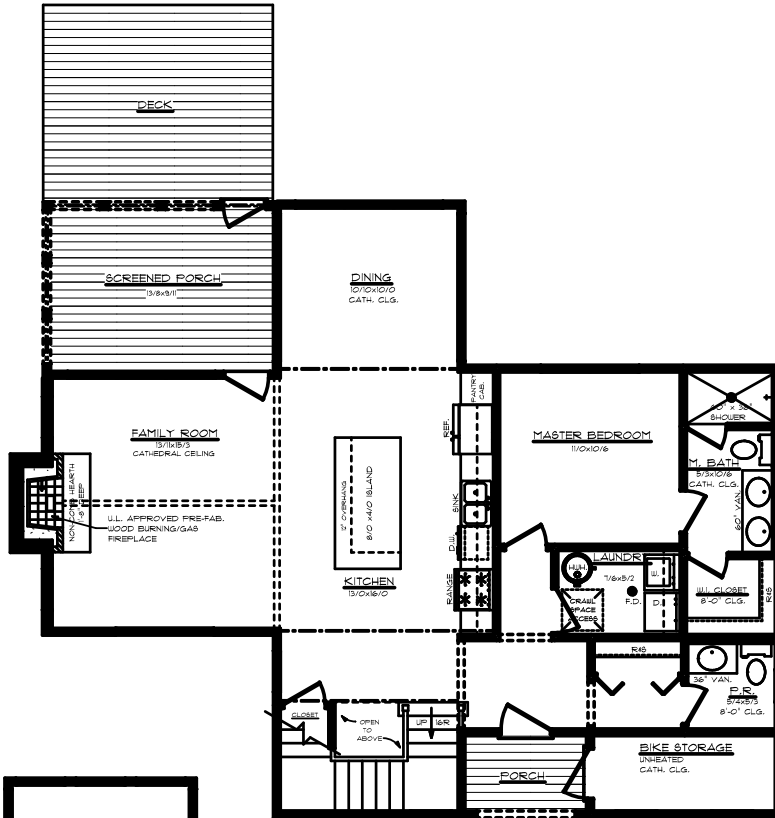


Yellowstone

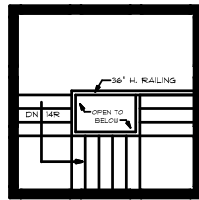


The Acadia II

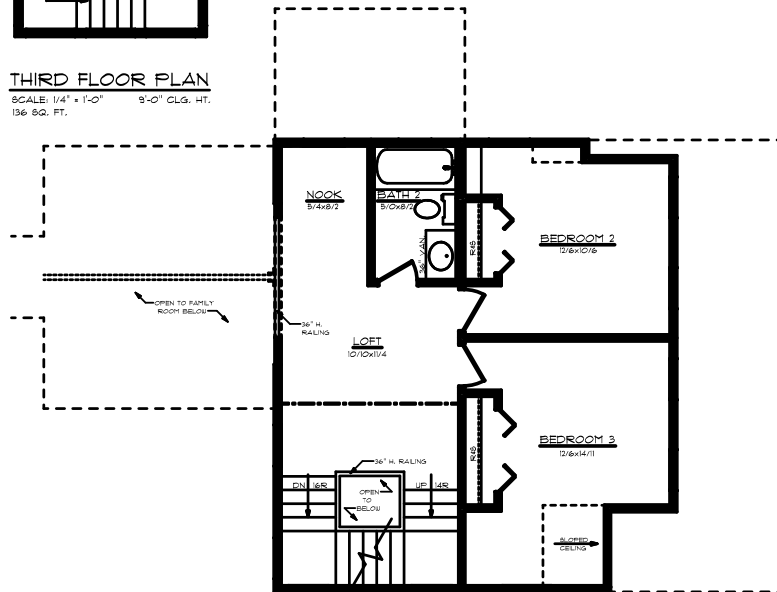
FLOOR PLAN OPTIONS



FIRST FLOOR PLAN
 SCALE: 1/4" = 1'-0" 9'-0" CLG. HT.
 1173 SQ. FT. (UNLESS NOTED OTHERWISE)



THIRD FLOOR PLAN
 SCALE: 1/4" = 1'-0" 9'-0" CLG. HT.
 136 SQ. FT.



SECOND FLOOR PLAN
 SCALE: 1/4" = 1'-0" 8'-0" CLG. HT.
 759 SQ. FT.