

Acadia I



The Acadia I STANDARD FEATURES

Acadia I Features

1st floor sq. ft. 818
 2nd floor sq. ft. 652
 3rd floor sq. ft. 136
 Total sq. ft. 1606
 Screen Porch sq. ft. 145
 Open Porch sq. ft. 0
 Bedrooms 2
 Loft/Sitting Area 1
 Bathrooms 2
 Fireplace 1
 Washer/Dryer Hook-ups Y
 Garage S/O 0
 Walk-out basement S/O 0

Special Features

Appliances

- Stainless Steel, Black or White
- Frigidaire Refrigerator - Freezer with Automatic Ice maker
- Gas Stove & Range
- Microwave
- Dishwasher
- Disposal

Cabinetry

- Kraftmaid Quality in a variety of finishes

Painting

- All rooms primed and finished, choice of two colors
- All interior molding painted or natural pine

Interior Finish

- White 5-inch baseboard and 3 1/2-inch door casings
- Shelf and rod in bedroom closets
- 5 shelf linen closet

Counter Tops

- Full line of granite

Windows & Doors

- Andersen 400 Series thermal pane wood windows including screens
- Andersen french doors

Floor Coverings

- Premium (upgraded carpet choices in 2nd floor bedrooms, hallways and staircase.
- Maple or Oak hardwood flooring, main floor- living room/dining room/kitchen/hallway/bedrooms
- Ceramic tile in baths, utility and laundry room

Heating & Air Conditioning

- Rheem high efficiency, 90 plus, natural gas furnace with humidifier
- Rheem high efficiency central air conditioning unit
- Superior 42-inch wood burning fireplace with cultured stone façade and wood mantle

Plumbing & Fixtures

- Copper supply lines, PVC drains
- 50 gallon water heater
- Kohler or Toto chrome faucets
- 6' Lasco - whirlpool tub in master bath
- Kohler lavatories
- Kohler pedestal sink
- Stainless steel - double under mount sink in kitchen
- Exhaust fan/light in baths
- Ceramic tile in showers and tub, shower bases fiberglass

Lighting & Electrical

- 200 AMP service, all wiring and plug placement to code and per electrical plan
- Front and rear exterior porch lights
- Recessed and overhead lights per lighting plan - standard white devices
- Light/fan ready junction box in bedrooms per plans

Roofing & Exterior Finish

- Timberline heavy texture asphalt composition shingles - 25 year warranty
- Natural Cedar and Composite siding and trim with on-site final stain - choice of colors
- White aluminum "bead board look" soffits

Home Electronics

- Category 5 phone wiring, 4 cable boxes and 4 phone jacks

Foundation

- Four-foot crawl space with concrete floor and walls, vents, drain and lighting

Natural Landscaping

- Final grade to meet codes with lot cleared of final building debris and dead tree branches.
- 2 outdoor water spigots provided
- Off-street natural stone parking place
- Step-stone path of natural shelf-rock to front door provided

AVAILABLE MODELS AT HIDDEN CREEK

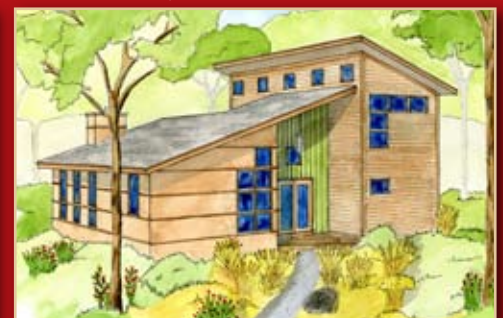
Acadia I & II



Denali I & II



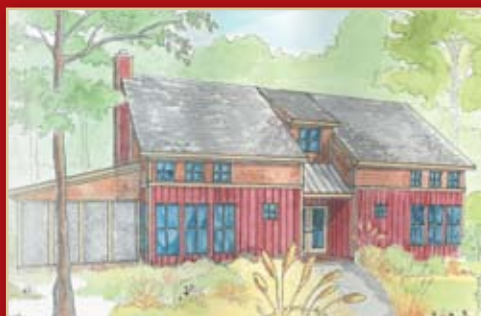
Grand Teton



Sequoia



Shenandoah

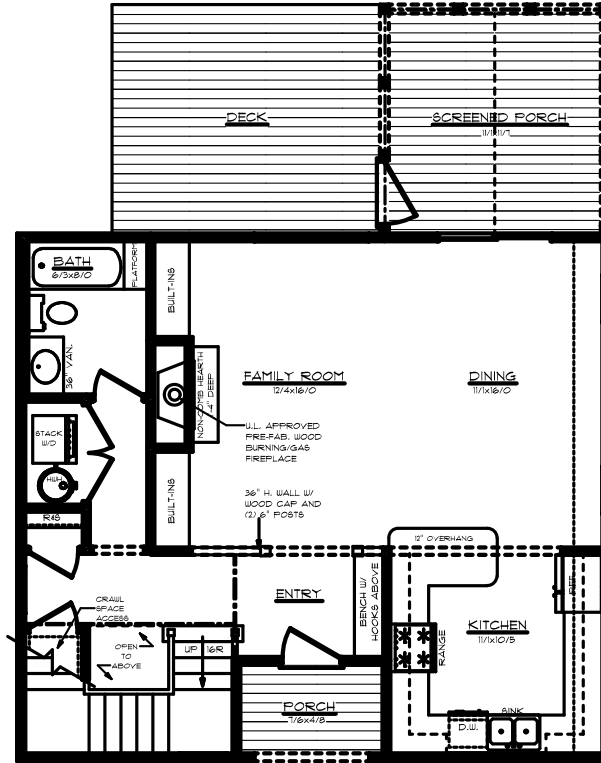


Yellowstone



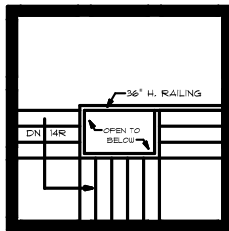
The Acadia I

FLOOR PLAN OPTIONS



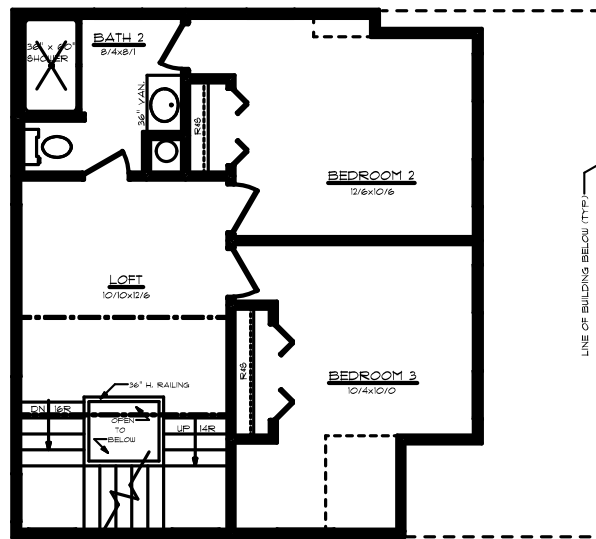
FIRST FLOOR PLAN

SCALE: 1/4" = 1'-0" 9'-0" CLG. HT.
 818 SQ. FT. (UNLESS NOTED OTHERWISE)



THIRD FLOOR PLAN

SCALE: 1/4" = 1'-0" 9'-0" CLG. HT.
 136 SQ. FT.



SECOND FLOOR PLAN

8'-0" WALL HEIGHT SCALE: 1/4" = 1'-0"
 682 SQ. FT.